







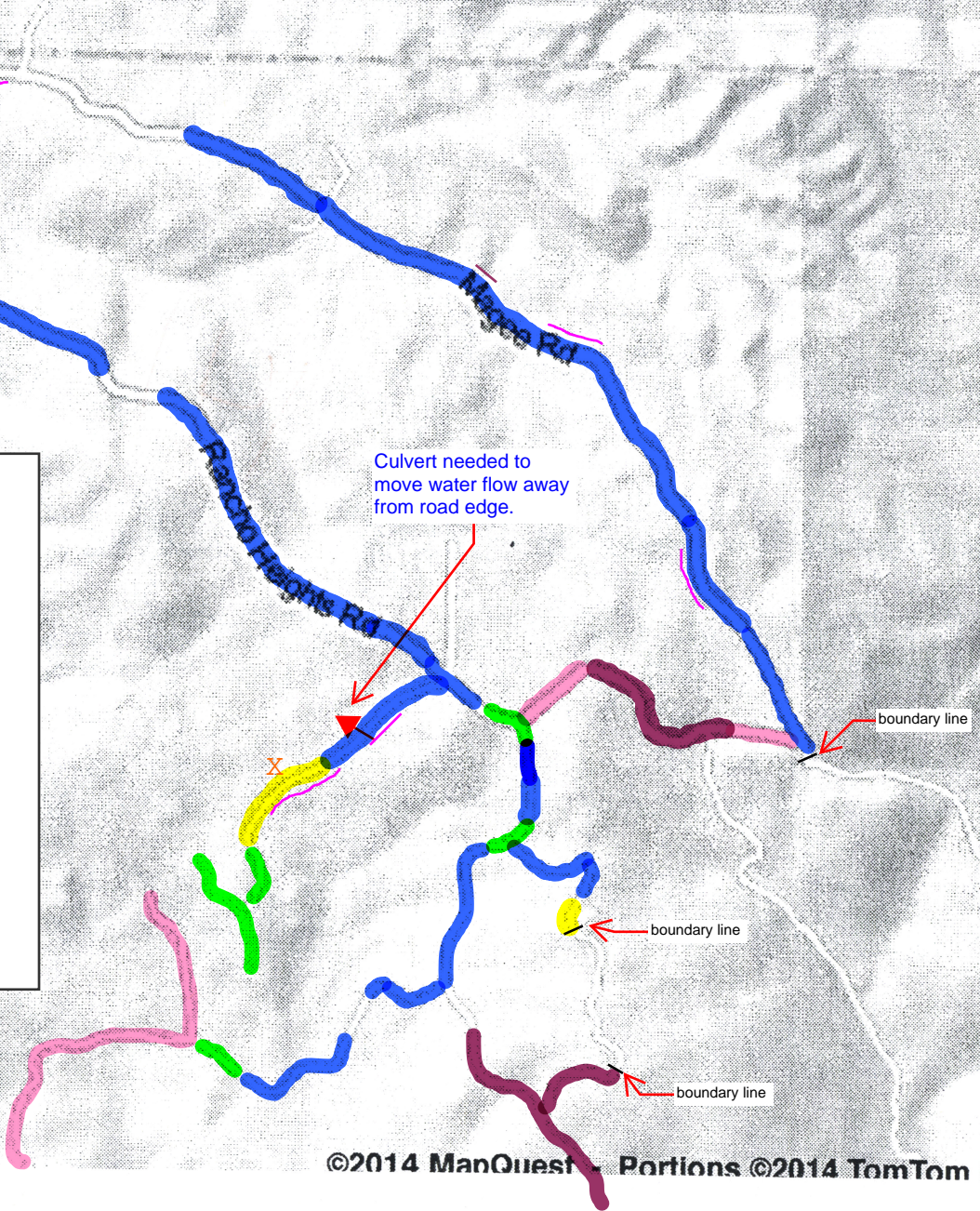


16

-  = 5% to 10% AC patching and then seal coat needed
-  = AC overlay needed
-  = Remove & replace (new AC) needed
-  = Existing dirt roads
-  = Existing dirt roads needing grading
-  = pot holes needing patching
-  = new curbs needed to control flow line
-  = Flow line work needed / add rip-rap



mapquest 2000ft  
500m

Assessment date 10/10/18

©2014 ManQuest Portions ©2014 TomTom I